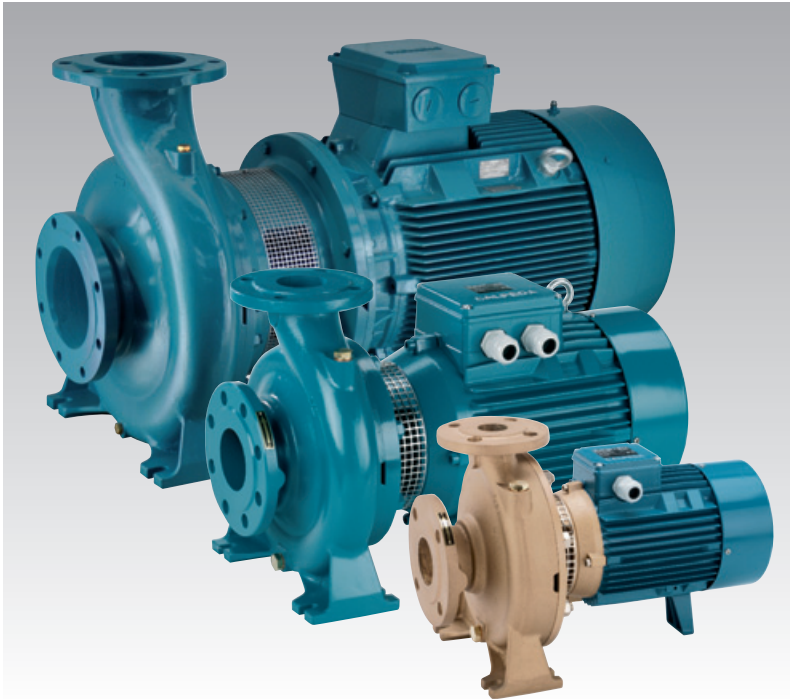


NM, NMS 60 Hz Close Coupled Centrifugal Pumps with flanged connections



2



Construction

Close-coupled centrifugal pumps; electric motor with extended shaft directly connected to the pump up to 30 kW, new bracket construction for standard motors (stub-shaft construction) from 37 to 75 kW with integrated thrust bearing. Pump casing with axial suction and radial delivery on top, main dimensions and performance according to EN 733. NM(S): version with pump casing and lantern bracket in cast iron. B-NM(S): version with pump casing and lantern bracket/casing cover in bronze. (the pumps are supplied fully painted).

Connections: Flanges according to PN 10, EN 1092-2.
Counter-flanges (on request)

Sizes	Flanges
from NM 32/.. to NM 50/...	Screwed flanges EN 1092-1, PN 16
from NM 65/.. to NMS 100/250	Flanges for welding EN 1092-1, PN 10

Applications

- For clean liquids without abrasives, which are non-aggressive for the pump materials (solids content up to 0,2%).
- For water supply.
- For heating, air conditioning, cooling and circulation plants.
- For civil and industrial applications.
- For fire fighting applications. - For irrigation.

Operating conditions

Liquid temperature from -10 °C to +90 °C.
 Ambient temperature up to 40 °C.
 Total suction lift up to 7 m.
 Maximum permissible working pressure up to 10 bar.
 Continuous duty.

Motor

2-pole induction motor, 60 Hz (n ≈ 3450 rpm).
NM, NMS: three-phase 220/380 V, 380/660 V.
 Insulation class F. Protection IP 54.
Classification scheme IE2 for three-phase motor from 0,75 kW.
 Constructed in accordance with: EN 60034-1; EN 60034-30.

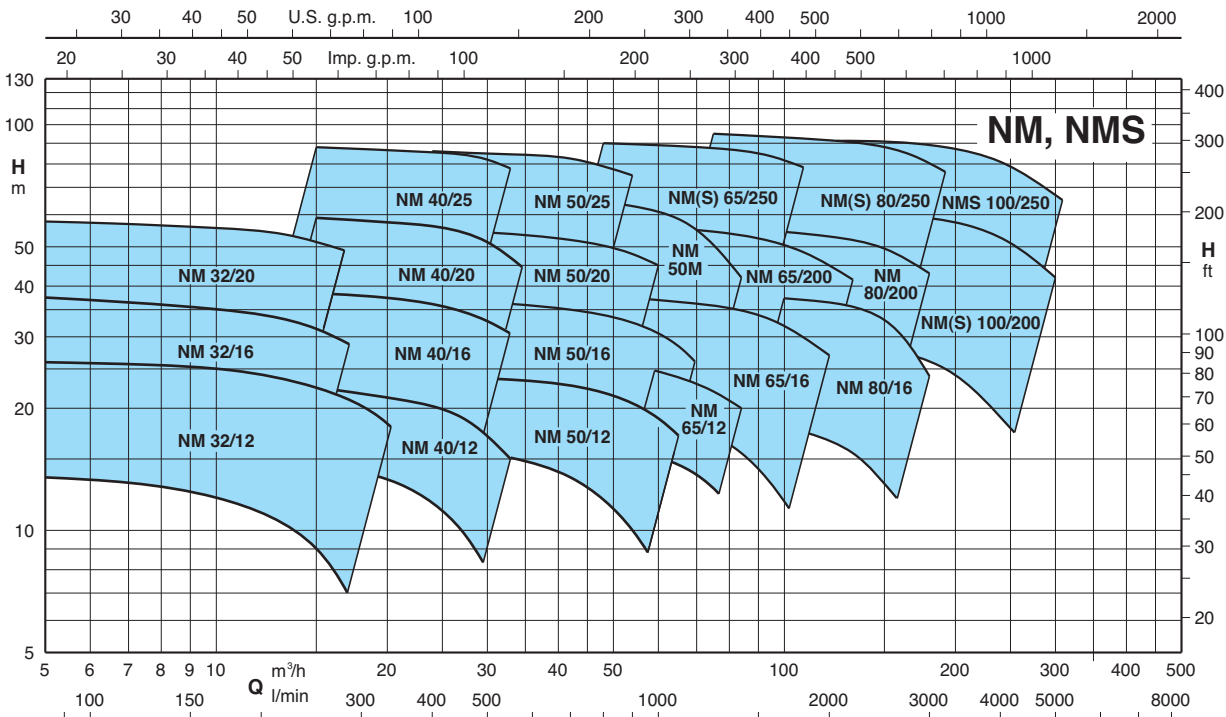
Special features on request

- Other voltages. - Protection IP 55.
- Bronze impeller. - Special mechanical seal.
- Packed gland (only for NM standard construction).
- Single-phase motor (NMM) up to 1.5 kW.
- Explosion proof construction in accordance with Directive 94/9 EEC (ATEX).
- Higher or lower liquid or ambient temperatures.

Materials

Components	NM, NMS	B-NM, B-NMS
Pump casing	Cast iron	Bronze
Lantern bracket NM	GJL 200 EN 1561	G-Cu Sn 10 EN 1982
Casing cover for NMS		
Lantern bracket NMS	Cast iron GJL 200 EN 1561	
Impeller	Cast iron GJL 200 EN 1561	Bronze G-Cu Sn 10 EN 1982
	Brass P- Cu Zn 40 Pb 2 UNI 5705 for NM 32/12-16-20, NM 40/20, B-NM 32/125-160-200, B-NM 40/200	
Shaft	AISI 303 up to 2.2 kW AISI 430 from 3 kW to 75 kW	Cr Ni Mo steel AISI 316
Mechanical seal	Carbon - Ceramic - NBR	
Counter-flanges	Steel Fe 430B UNI 7070	

Coverage chart n = 3450 rpm



Performance n ≈ 3450 rpm

B-NM	NM	P ₂		Q m³/h l/min	6,6	7,5	8,4	9,6	10,8	12	13,2	15	16,8	18,9	21	24	27	30
		kW	HP		H m													
B-NM 32/12F-60	NM 32/12FE-60	0,55	0,75	H m	14	13,5	13	12,5	12	11,5	10,5	9						
B-NM 32/12D-60	NM 32/12DE-60	0,75	1		19,5	19	19	18,5	18	17,5	16,5	15,5						
B-NM 32/12A-60	NM 32/12AE-60	1,1	1,5		24,5	24	24	23,5	23	22	21,5	20						
B-NM 32/12S-60	NM 32/12SE-60	1,5	2		26	26	25,5	25,5	25	24,5	24	22,5	21*	19*	16,5*	12,5*		
B-NM 32/16B-60	NM 32/16BE-60	1,5	2		31	30,5	30	29,5	29	28	27	25*	23*					
B-NM 32/16A-60/A	NM 32/16A-60/A	2,2	3		36,5	36	35,5	35	34	33	32,5	31*	29*					
B-NM 32/20D-60/A	NM 32/20D-60/A	2,2	3		39	38	37,5	36,9	35	34	32							
B-NM 32/20C-60/A	NM 32/20C-60/A	3	4		45	44,5	44	43	42	41	40	37	34*					
B-NM 32/20A-60/A	NM 32/20A-60/A	4	5,5		57	56,5	56	55,5	55	54	53	51	49*					

B-NM	NM	P ₂		Q m³/h l/min	15	16,8	18,9	21	24	27	30	33	37,8	39	42	45	48	54
		kW	HP		H m													
B-NM 40/12F-60	NM 40/12F-60/A	1,1	1,5	H m	15,4	14,9	14,3	13,4	11,8	10	7,8	5,6						
B-NM 40/12C-60	NM 40/12C-60/A	1,5	2		18,5	18,1	17,6	17	15,8	14,2	12,4	10,5	6,9					
B-NM 40/12A-60/A	NM 40/12A-60/B	2,2	3		22,5	22,3	21,9	21,4	20,6	19,6	18,3	16,7	13,7	12,9				
B-NM 40/16C-60/A	NM 40/16C-60/B	2,2	3		25,5	25,1	24,4	23,6	22,1	20,1	17,8	15,4	10,6					
B-NM 40/16B-60/A	NM 40/16B-60/B	3	4		31	30,6	30,3	29,6	28,5	27,1	25,4	23,2	19,2	18,1				
B-NM 40/16A-60/A	NM 40/16A-60/B	4	5,5		37,1	36,9	36,5	36,1	35,2	34,3	33,2	31,8	28,8	27,9	25,6	23		
B-NM 40/20C-60/A	NM 40/20C-60/A	4	5,5		44	43	42	41	39	36								
B-NM 40/20B-60/A	NM 40/20B-60/A	5,5	7,5		52	51,5	50,5	49,5	47,5	44,5	40	35						
B-NM 40/200B-60/A	NM 40/200B-60/A	5,5	7,5		56,5	56	55	54	52	49								
B-NM 40/200A-60/A	NM 40/200A-60/A	7,5	10		59,5	59	58,5	58	56	53,5	50,5	47	38,5					
B-NM 40/25C-60/B	NM 40/25C-60/B	9,2	12,5		65,4	65	64,4	63,5	61,5	58,6	54,2	49						
B-NM 40/25B-60/B	NM 40/25B-60/B	11	15		71,5	71,3	70,8	70,3	68,9	66,4	63,3	59,2	50					
B-NM 40/25A-60/B	NM 40/25A-60/B	15	20		90,4	90,2	89,7	89,1	88,5	87,3	86,1	83,8	78	76				

B-NM	NM	P ₂		Q m³/h l/min	24	27	30	33	37,8	42	48	54	60	66	69	72	75	84
		kW	HP		H m													
B-NM 50/12F-60/A	NM 50/12F-60/B	2,2	3	H m			16,1	15,4	14,2	13	11,1	8,6	5,8					
B-NM 50/12D-60/A	NM 50/12D-60/B	3	4				19,4	19	18	17	15,5	13,5	11,1	8,4				
B-NM 50/12A-60/A	NM 50/12A-60/B	4	5,5				24,8	24,6	24	23,4	22,3	20,8	19	17	16	14,8	13,6	
B-NM 50/160B-60/B	NM 50/160B-60/B	5,5	7,5				35,3	34,9	33,6	32,4	30,1	27,5	24,5	20,9	19	17,1	15,1	
B-NM 50/160A-60/B	NM 50/160A-60/B	7,5	10				42,7	41,6	41,2	40,3	38,5	36,3	33,8	30,9	29,4	27,8	26,1	20,4
B-NM 50/200B-60/B	NM 50/200B-60/B	9,2	12,5		51	50,6	50,4	49,8	48,5	47,1	44	40,5	36	30,2	27,3			
B-NM 50/200A-60/B	NM 50/200A-60/B	11	15		57,6	57,7	57,3	56,9	55,7	54,6	52,2	49,5	46	41,8	39	36,2	33,2	
B-NM 50/25C-60/B	NM 50/25C-60/B	11	15		61,9	61,2	60,3	59,3	57,2	55	50	44	36,5					
B-NM 50/25B-60/B	NM 50/25B-60/B	15	20		74,6	73,9	73,2	72	70,1	68,1	64,3	59,3	52,8	43,8				
B-NM 50/25A-60/B	NM 50/25A-60/B	18,5	25		87,6	87,3	86,9	86,2	84,7	83	79,8	76	72	66,9				
B-NM 50/25/65E-60/A	NM 50M/E-60/A	11	15				47,5	47	46	45	42	38,5	34	29	26	24	20	
B-NM 50/25/65D-60/A	NM 50M/D-60/A	15	20				58	57,5	56	55	53	50,5	47,5	44	42	40	36,5	25*
B-NM 50/25/65C-60/A	NM 50M/C-60/A	18,5	25				69	68,5	67,5	66,5	64,5	62,5	60,5	57,5	56	54	51	42*

B-NM	NM	P ₂		Q m³/h l/min	37,8	42	48	54	60	66	75	84	96	108	120	132	150	168
		kW	HP		H m													
B-NM 65/12E-60/A	NM 65/12E-60/A	4	5,5	H m	19	18,5	18	17	16	15	13*							
B-NM 65/125C-60/A	NM 65/125C-60/A	5,5	7,5		23	22,5	22	21,5	21	19,5	17,5	15*						
B-NM 65/125A-60/A	NM 65/125A-60/A	7,5	10		27	26,5	26	25,5	25	24	22	19,5*						
B-NM 65/160E-60/A	NM 65/160E-60/A	5,5	7,5				20	19,5	19	18	17	15	13*	10*				
B-NM 65/160D-60/A	NM 65/160D-60/A	7,5	10				26	25,5	25	24,5	23,5	22	19,5*	16,5*	13*			
B-NM 65/160C-60/A	NM 65/160C-60/A	9,2	12,5				30	29,5	29	28,5	27,5	26,5	24*	21*	18*			
B-NM 65/160B-60/A	NM 65/160B-60/A	11	15				33,5	33	32,5	32	31	29,5	28*	25*	22,5*			
B-NM 65/160A-60/A	NM 65/160A-60/A	15	20				37,5	37	37	36,5	36	34,5	33*	30*	27*			
B-NM 65/200C-60/A	NM 65/200C-60/A	15	20				44	43,5	43	42,5	41	40	37,5*	35*	31*	27*		
B-NM 65/200B-60/A	NM 65/200B-60/A	18,5	25				49,5	49	48,5	48	47,5	46,5	44,5*	42*	38,5*	35*		
B-NM 65/200A-60/A	NM 65/200A-60/A	22	30				56	55,5	55	54,5	54	53,5	51*	48*	45*	41*		
B-NM 65/250C-60/A	NM 65/250C-60/A	22	30				64	63	62,5	61,5*	60*	57,5*	54,5*	50*				
B-NM 65/250B-60/A	NM 65/250B-60/A	30	40				79,5	79	78,5	78*	77*	75*	71*	66,5*				
B-NMS 65/250A-60	NMS 65/250A-60	37	50				90	89,5	89	88,5*	87*	86*	83*	78,5*				

Performance n ≈ 3450 rpm

B-NM	NM	P ₂		Q m ³ /h l/min	H m																
		kW	HP		75	84	96	108	120	132	150	168	180	192	210	240	270	300			
B-NM 80/160E-60/A	NM 80/16E-60/A	7,5	10	19,5	19	18	17,5*	16,5*	15*	13*											
B-NM 80/160D-60/A	NM 80/16D-60/A	9,2	12,5	23	22,5	22	21*	19,5*	18*	15*											
B-NM 80/160C-60/A	NM 80/16C-60/A	11	15	27,5	27	25,5	25*	24,5*	23*	20*	16*										
B-NM 80/160B-60/A	NM 80/16B-60/A	15	20	34	33,5	33	32,5*	31,5*	31*	28*	22,5*	18*									
B-NM 80/160A-60/A	NM 80/16A-60/A	18,5	25	38,5	38	37,5	37*	36,5*	36*	33*	28,5*	24*									
B-NMS 80/200B	NM 80/200B-60/A	22	30	46,5	46	45,5	44,5	43,5*	42*	39*	35*	32*									
B-NMS 80/200A	NM 80/200A-60/A	30	40	56	55,5	55	54	53,5*	52*	49*	46*	43*									
B-NMS 80/250E	NM 80/250E-60/A	22	30	51	50	48,5	46,5	44,5*	42*	38*	33*	29*									
B-NMS 80/250D	NM 80/250D-60/A	30	40	65	64	62,5	61	59*	56,5*	53*	49*	45*	41*								
B-NMS 80/250C	NMS 80/250C-60	37	50	73,5	73	72	70,5	69*	67*	63*	59*	55*	51*								
B-NMS 80/250B	NMS 80/250B-60	45	60	84	83,5	82,5	81	80*	78*	74*	70*	67*	62,5*								
B-NMS 80/250A	NMS 80/250A-60	55	75	94,5	94	93	92,5	91,5*	90*	87,5*	84*	80*	76,5*								
B-NMS 100/200E	NM 100/200E-60/A	18,5	25				30	29,5	29	28	27	26*	24,5*	22,5*	19*						
B-NMS 100/200D	NM 100/200D-60/A	22	30				36	35,5	35	34	33	32*	31*	29*	24*						
B-NMS 100/200C	NM 100/200C-60/A	30	40				45	44,5	44	43	42,5	41*	40*	39*	34*	28*					
B-NMS 100/200B	NMS 100/200B	37	50				54	53,5	53	52,5	51,5	50*	49*	47,5*	43*	38*					
B-NMS 100/200A	NMS 100/200A	45	60				61,5	61	60,5	60	59,5	59*	58*	56*	52,5*	48*	42*				
B-NMS 100/250B	NMS 100/250B	55	75				73,5	73	72,5	71,5	70	69*	67*	65*	60*	55*	48*				
B-NMS 100/250A	NMS 100/250A	75	100				90,5	90	90	89	88,5	87,5*	87*	85*	81*	75*	67*				

NM(S) Standard construction.
B-NM(S) Bronze construction.

P₂ Rated motor power output.
 H Total head in m.

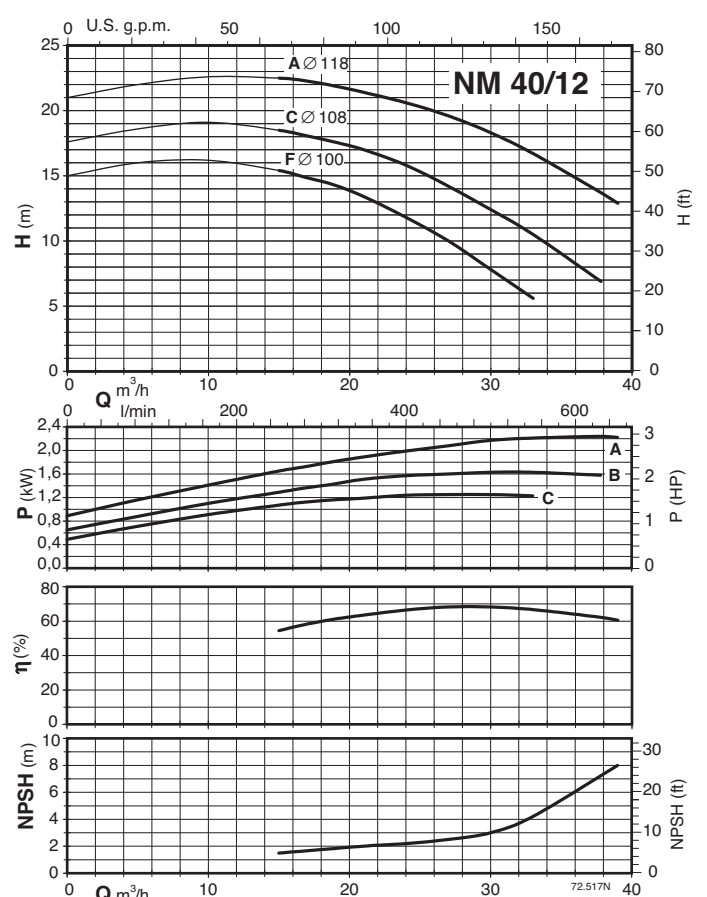
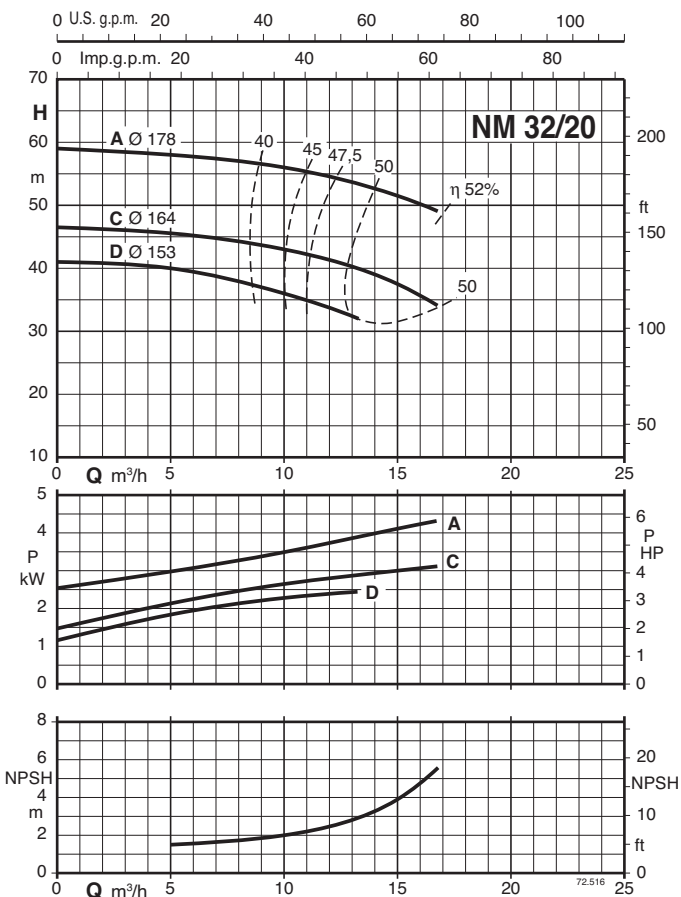
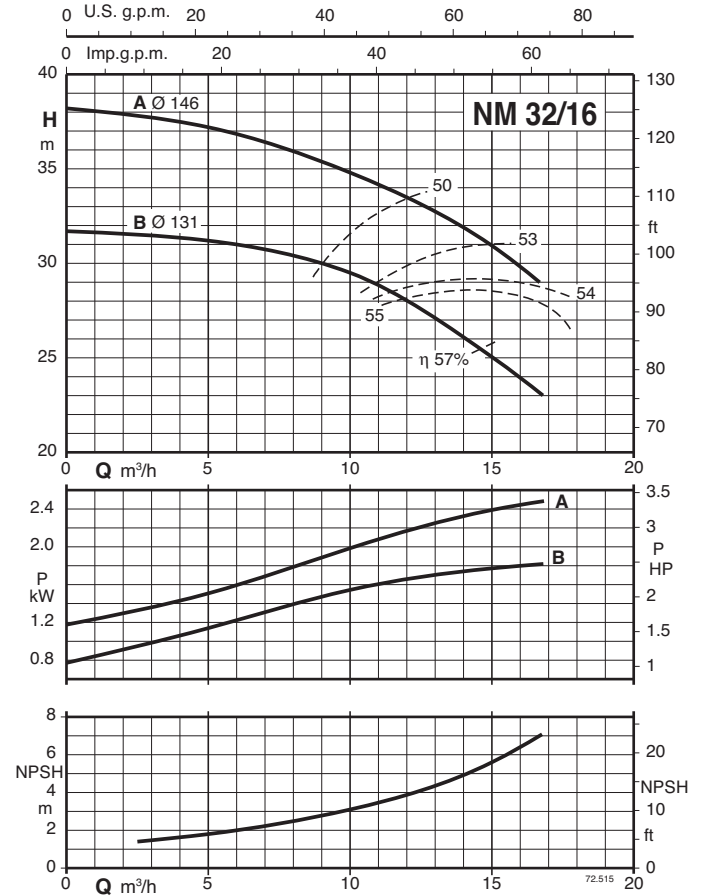
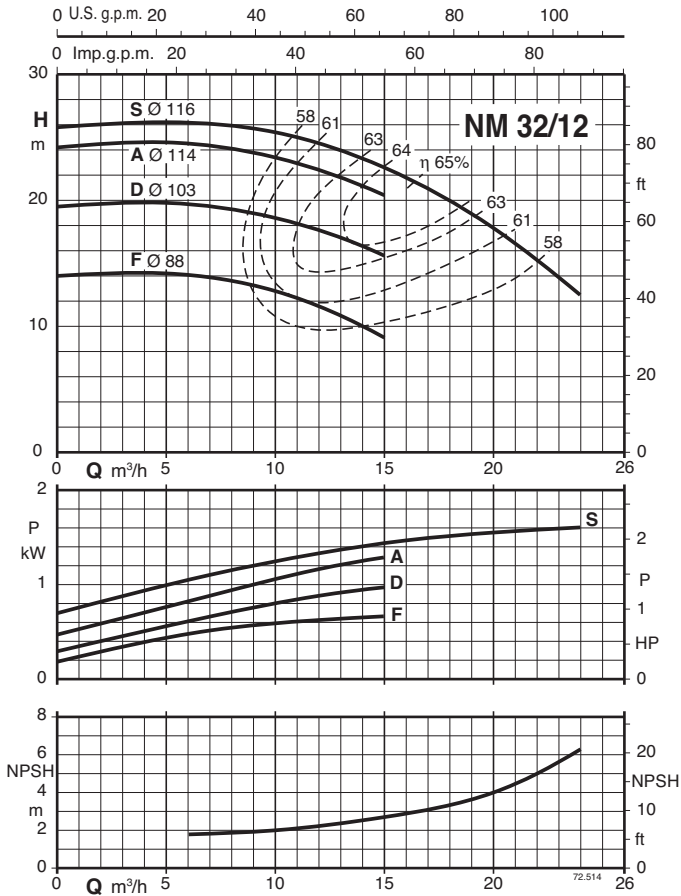
* Maximum suction lift 1-2 m.
 ◦ With 1 m suction head.
 Tolerances according to ISO 9906, annex A.

Rated currents

P ₂		220V Δ / 380V Y 380V Δ / 660V Y			I _A /I _N
kW	HP	I _N A	I _N A	I _N A	
0,55	0,75	4,5	2,6		5,2
0,75	1	4,5	2,6		5,2
1,1	1,5	5,7	3,3		6,8
1,5	2	9	5,2		5,4
2,2	3	11,1	6,5		7,3
3	4	13,4	7,7		8,4
4	5,5		11,2	6,5	7,8
5,5	7,5		13,7	7,9	8,7
7,5	10		17	9,8	9,2
9,2	12,5		22	12,7	8,2
11	15		25,8	14,9	8,5
15	20		33,2	19,2	9,4
18,5	25		41,2	23,8	9,3
22	30		49,8	28,8	10,6
30	40		65,4	37,8	8,7
37	50		82	47	8,5
45	60		97	56	8
55	75		119	68,5	7,2
75	100		157	90	6

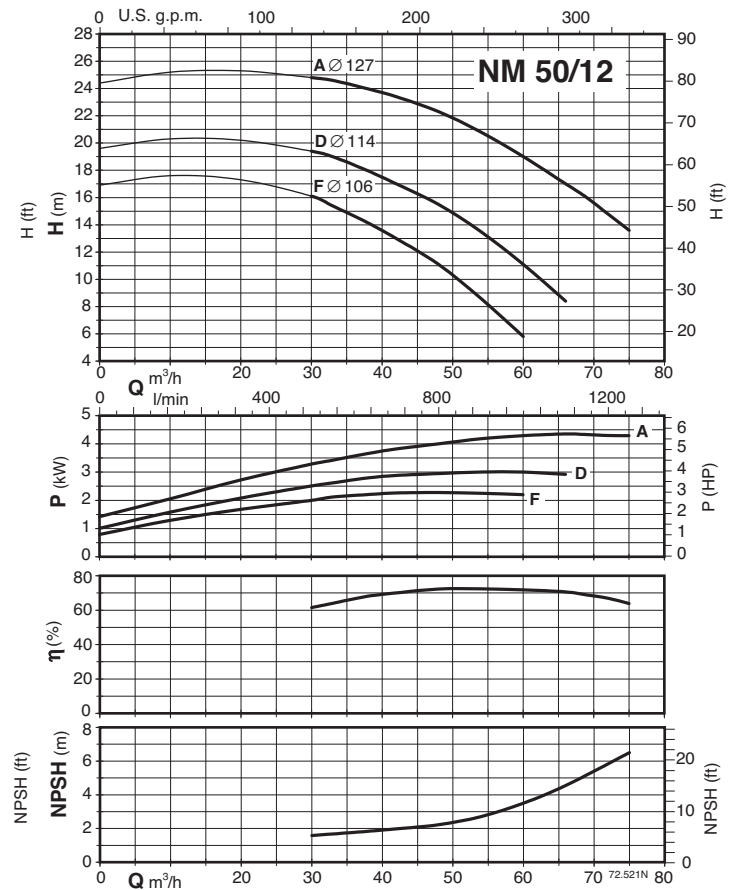
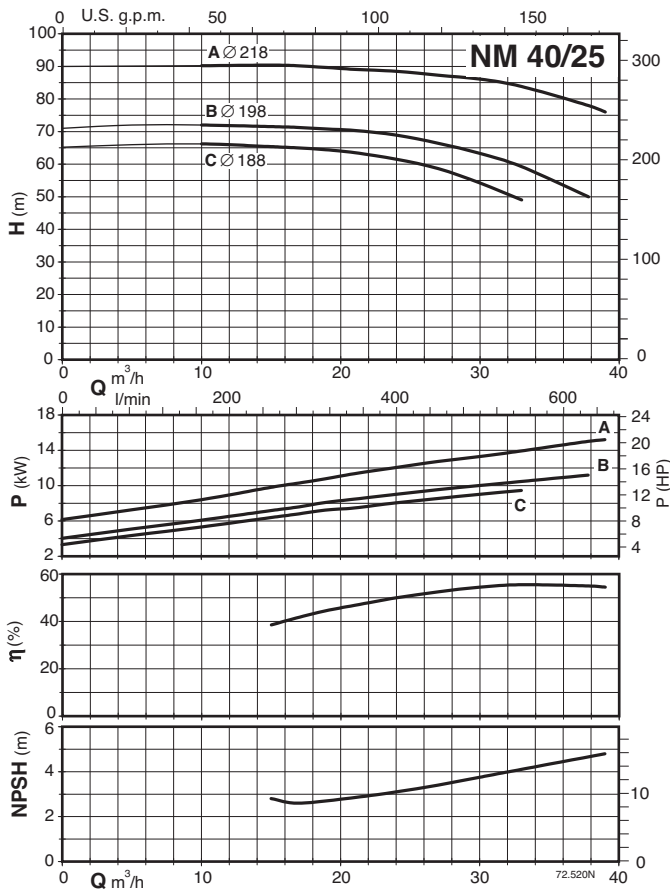
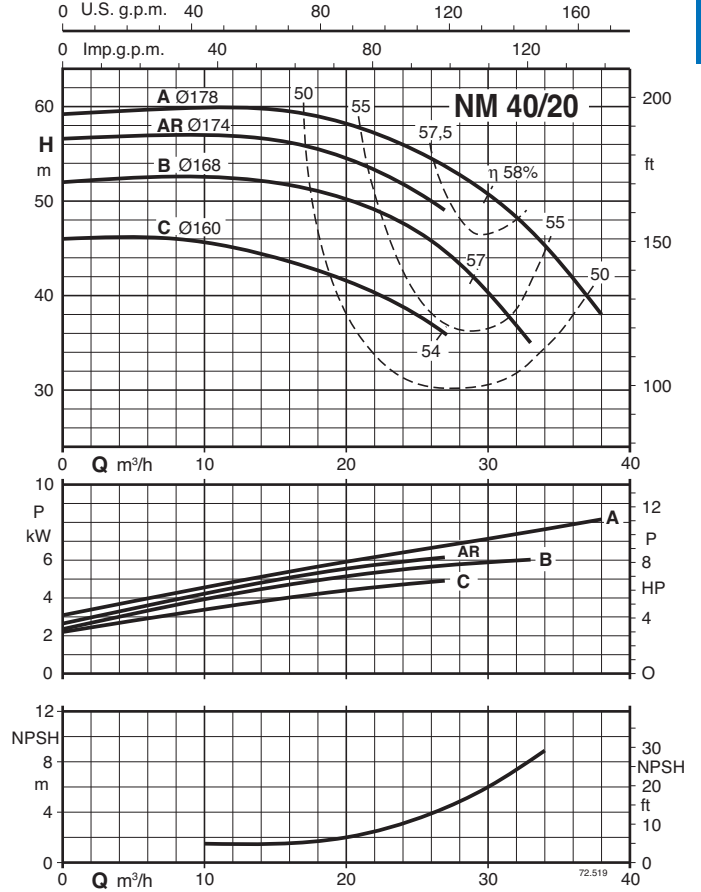
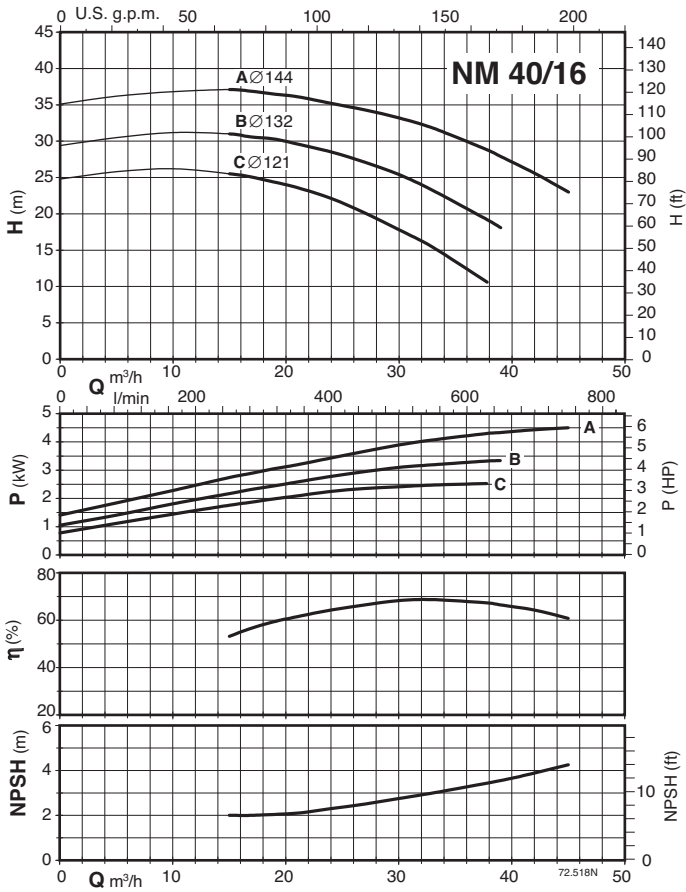
P₂ Rated motor power output.
 I_A/I_N D.O.L. starting current / Rated current

Characteristic curves n = 3450 rpm

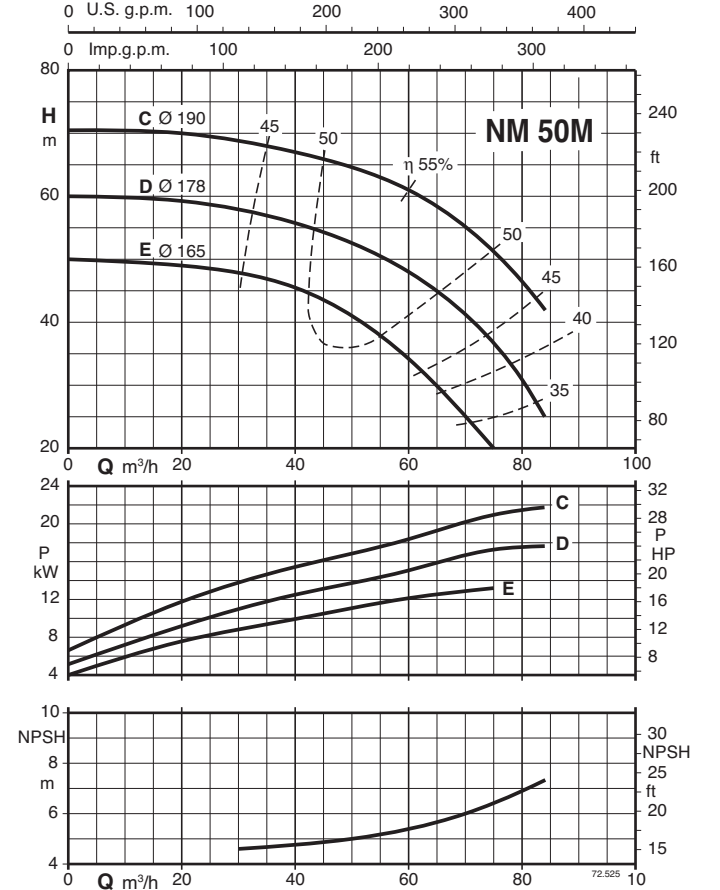
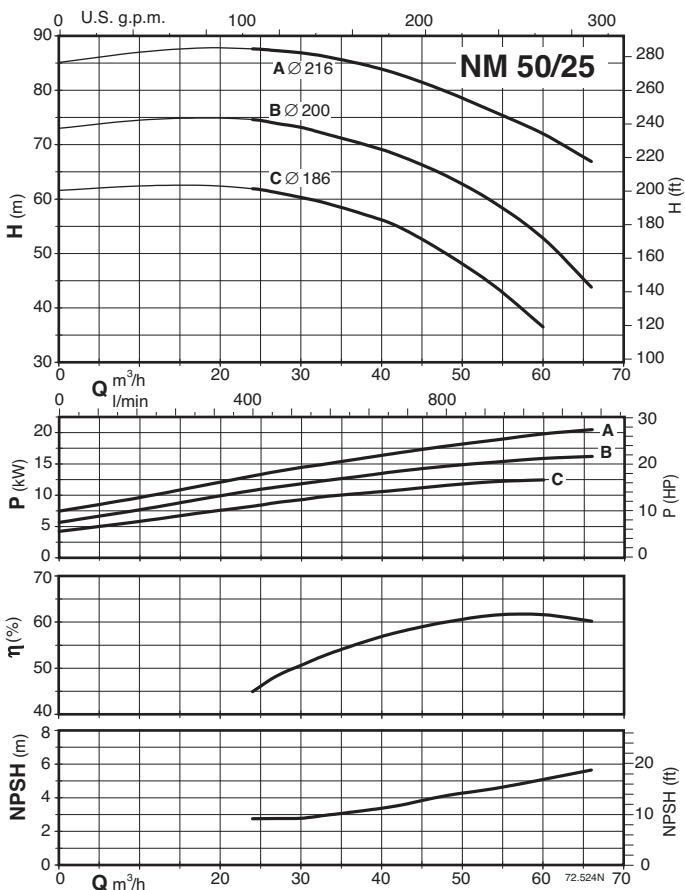
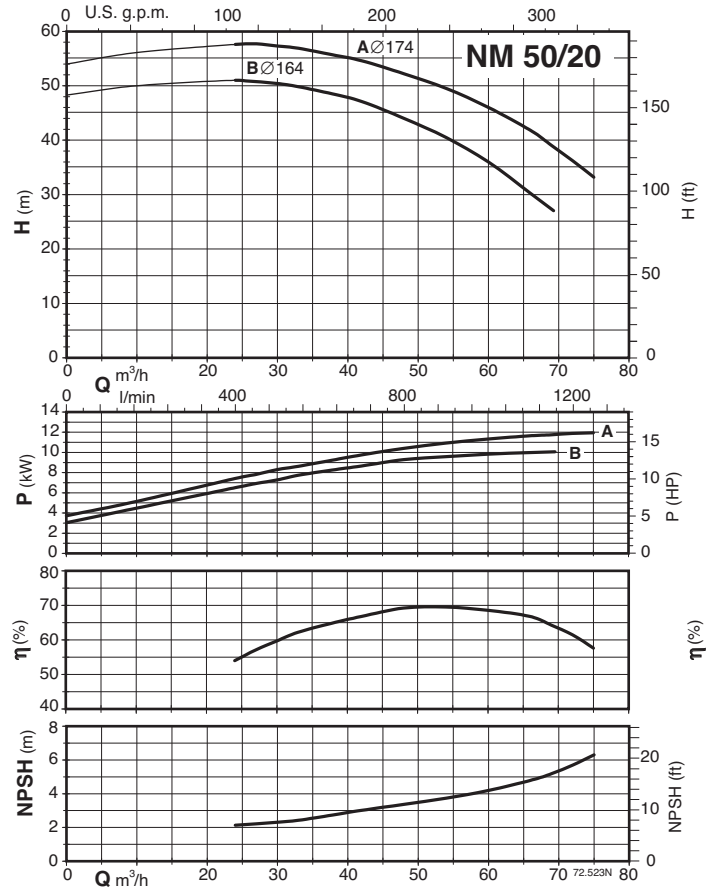
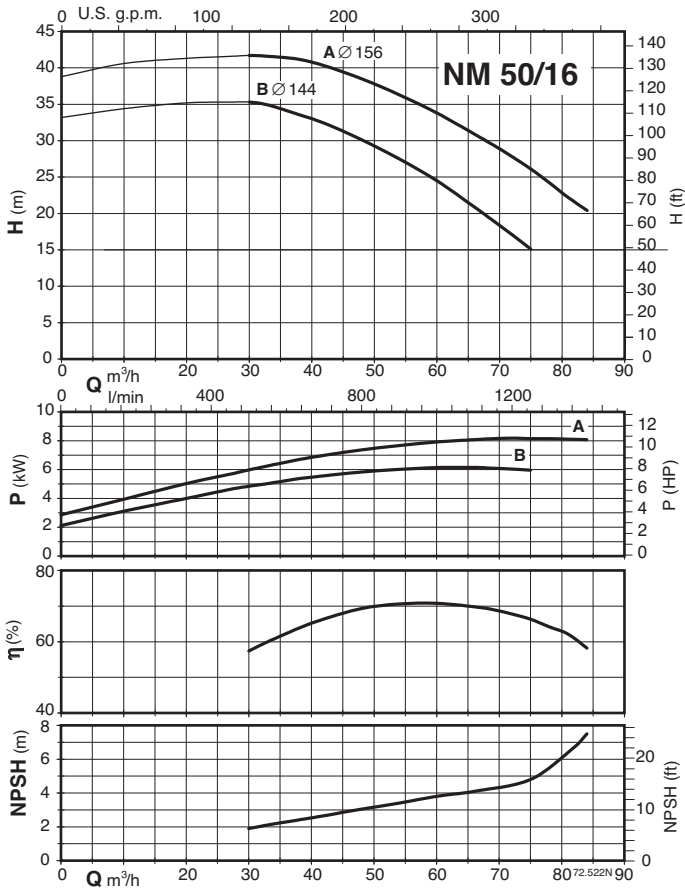


Characteristic curves n = 3450 rpm

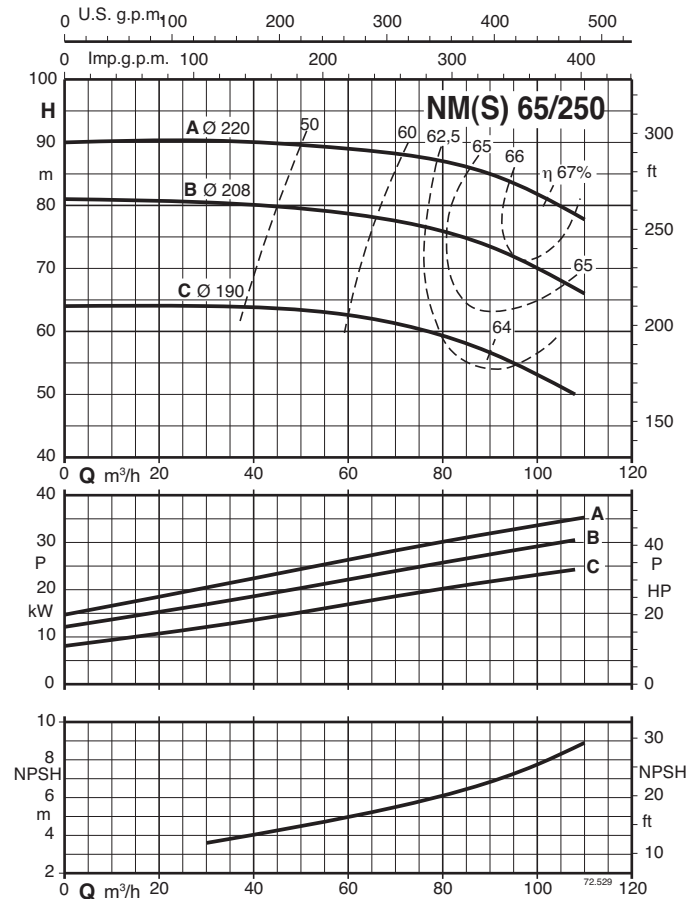
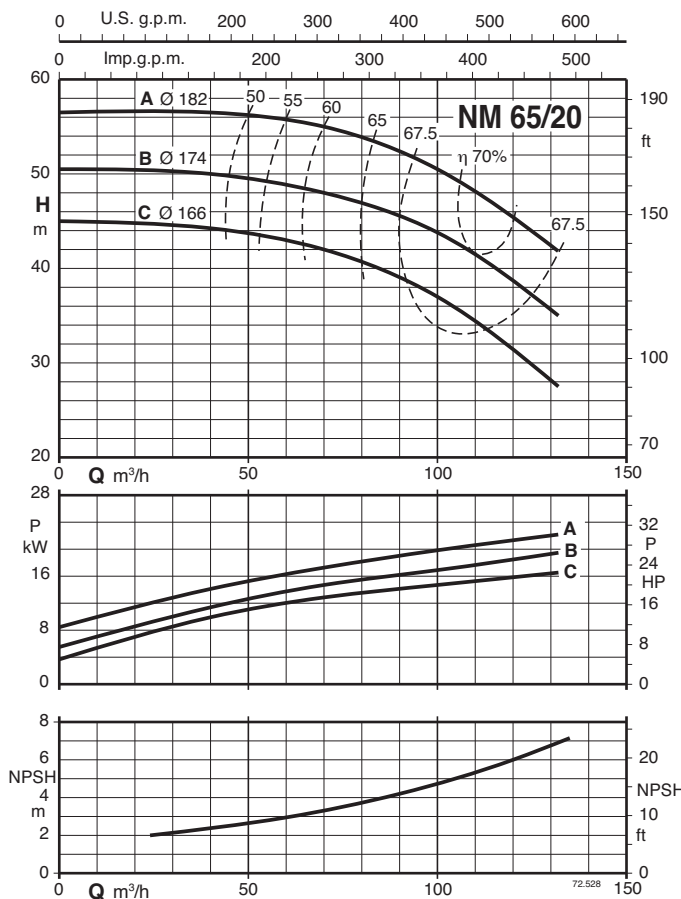
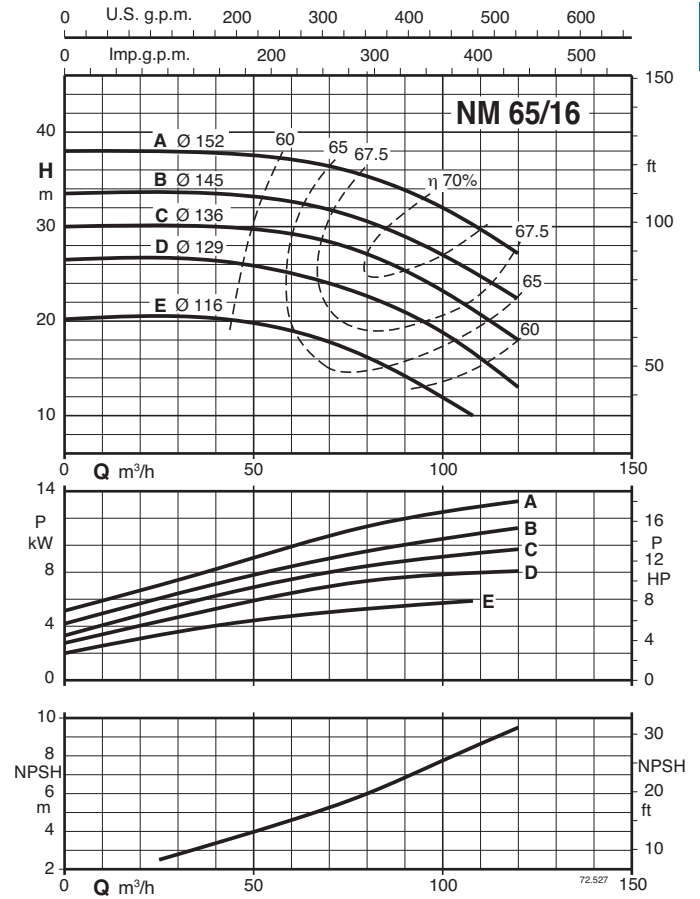
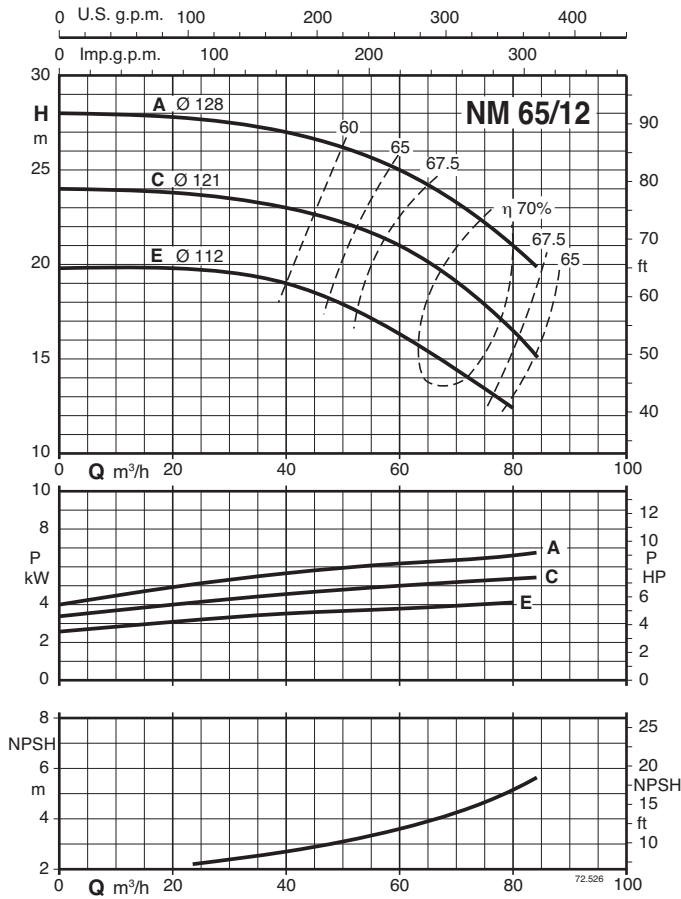
2



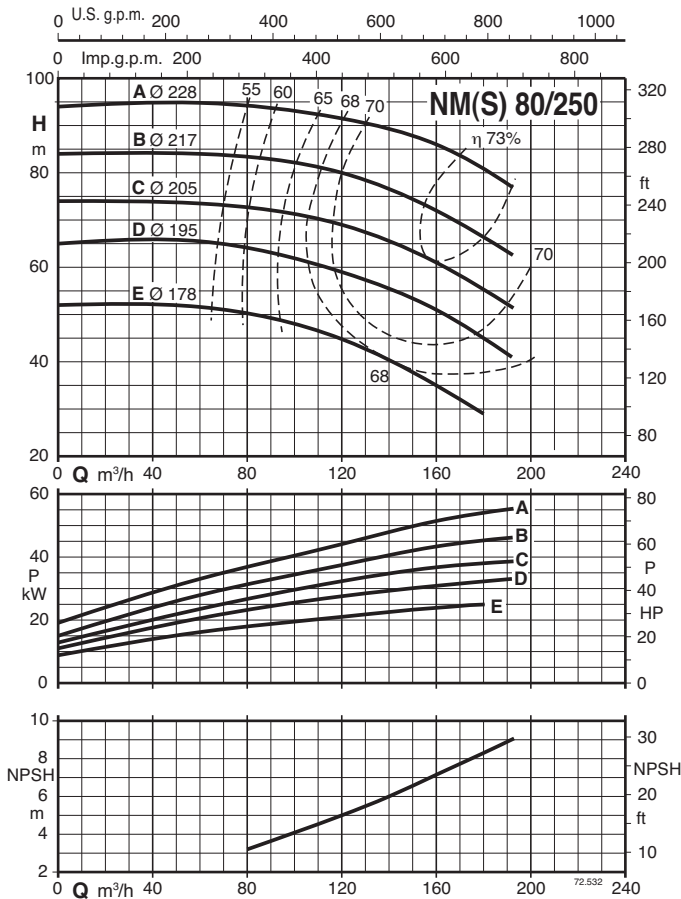
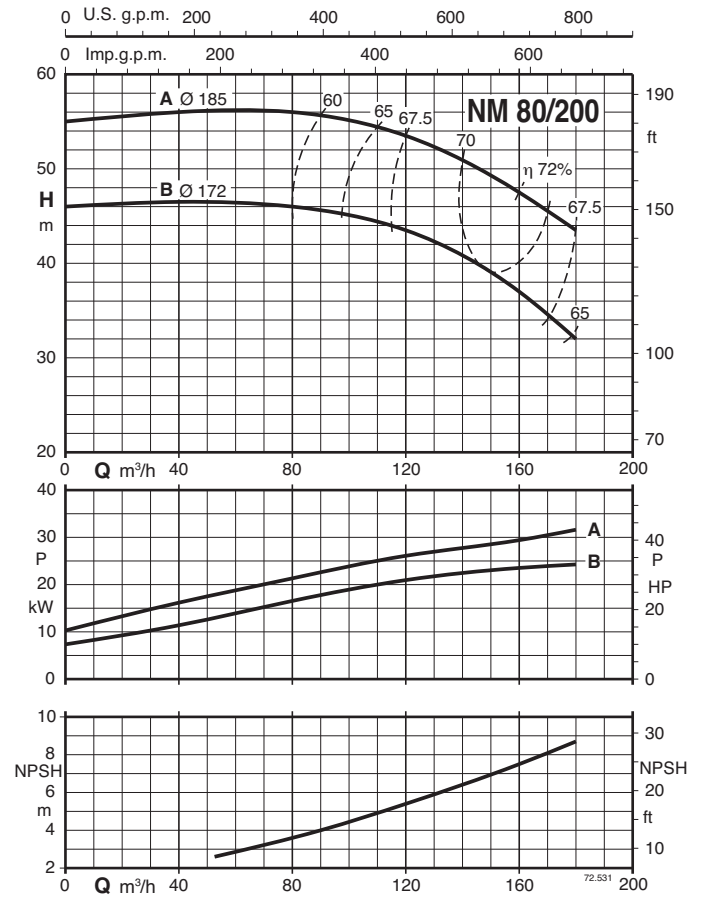
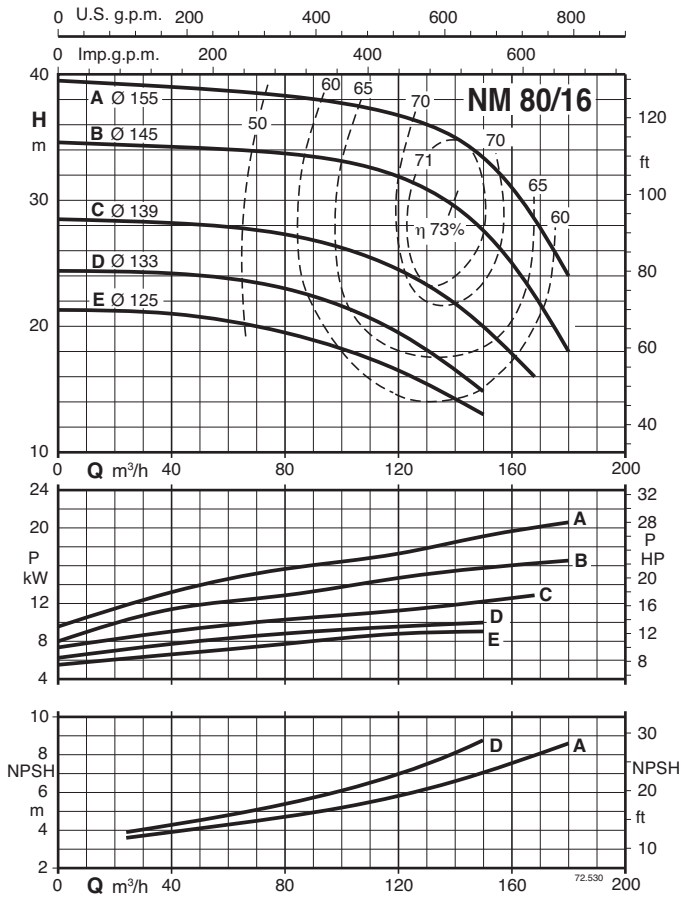
Characteristic curves n = 3450 rpm



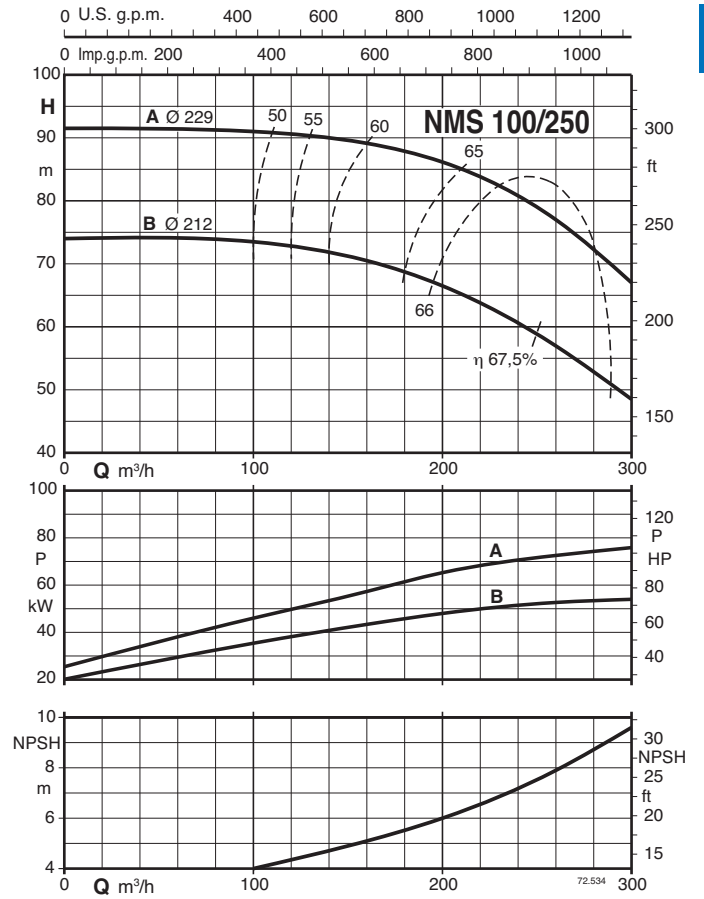
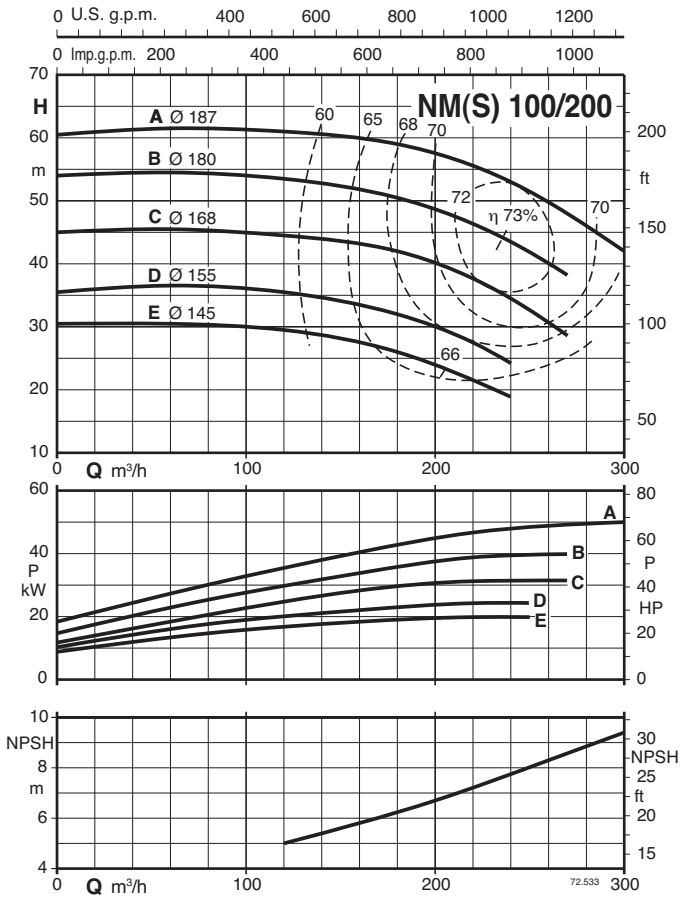
Characteristic curves n = 3450 rpm



Characteristic curves n = 3450 rpm

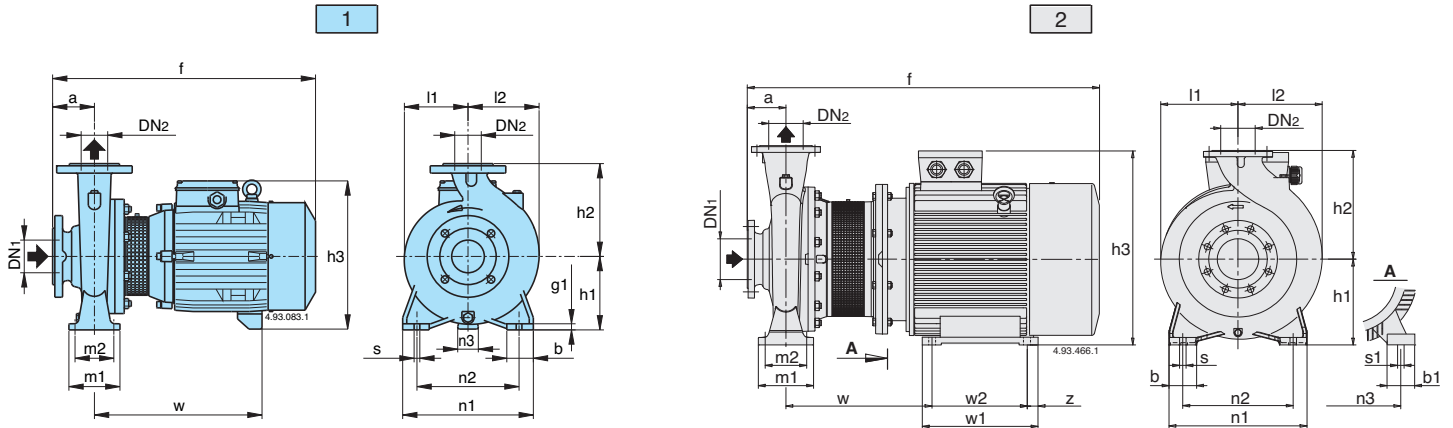


Characteristic curves n = 3450 rpm



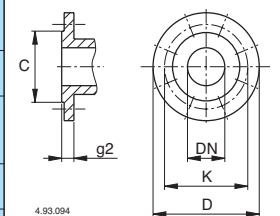
2

Dimensions and weights



Picture	NM	mm																				kg					
		DN1	DN2	a	f	h1	h2	h3	h4	m1	m2	n1	n2	n3	z	b	b1	s	s1	l1	l2		w	w1	w2	g1	
1	NM 32/12SE-60,AE-60,DE-60,FE-60	50	32	80	405	112	140	240	-	100	70	190	140	37	-	50	-	14	-	93	97	245	-	-	12	27-25-24-24	
	NM 32/16BE-60 NM 32/16A-60/A	50	32	80	410 450	132	160	260	-	100	70	240	190	47	-	50	-	14	-	120	120	250 290	-	-	12	34 39	
	NM 32/20D-60/A NM 32/20C-60/A NM 32/20A-60/A	50	32	80	450 475 475	160	180	298	-	100	70	240	190	62 60 60	-	50	-	14	-	140	140	290 295 295	-	-	12	42 52 52,5	
	NM 40/12C-60/A, F-60/A NM 40/12A-60/B	65	40	80	410 450	112	140	240	-	100	70	210	160	37	-	50	-	14	-	100	113	250 290	-	-	12	29-27 34	
	NM 40/16C-60/B NM 40/16B-60/B NM 40/16A-60/B	65	40	80	450 475 475	132	160	270	-	100	70	240	190	47 45 45	-	50	-	14	-	119	119	290 295 295	-	-	12	39 48 49,5	
	NM 40/20C-60/A, D-60/A NM 40/20A-60/A, AR-60/A, B-60/A	65	40	100	495 525	160	180	298 320	-	100	70	265	212	60 49	-	50	-	14	-	140	140	295 320	-	-	12	55,5-55,5 72,5-66-66	
	NM 40/25B-60/B, C-60/B NM 40/25A-60/B	65	40	100	640 715	180	225	365	-	125	95	320	250	50	-	65	-	14	-	175	175	410 460	-	-	15	116-110 145,5	
	NM 50/12F-60/B NM 50/12D-60/B NM 50/12A-60/B	65	50	100	470 495 495	132	160	270	-	100	70	240	190	47 45 45	-	50	-	14	-	121	137	290 295 295	-	-	12	41 50 51,5	
	NM 50/16A-60/B, B-60/B NM 50/20A-60/B, B-60/B	65	50	100	525 640	160	180	320 345	-	100	70	265	212	49 40	-	50	-	14	-	127	141	320 410	-	-	14	70,5-64 106-100	
	NM 50/25C-60/B NM 50/25B-60/B NM 50/25A-60/B	65	50	100	645 720 720	180	225	365	-	125	95	320	250	50	-	65	-	14	-	175	175	415 465 465	-	-	15	126 144,5 153	
	NM 50M/E-60/A NM 50M/D-60/A NM 50M/C-60/A	65	50	100	645 720 720	180	225	365	-	125	95	320	250	50	-	65	-	14	-	175	175	415 465 465	-	-	15	117,5 144 162	
	NM 65/12E-60/A NM 65/12A-60/A, C-60/A	80	65	100	495 525	160	180	298 320	-	125	95	280	212	60 49	-	65	-	14	-	134	156	295 320	-	-	15	55,5 73,5-68	
	NM 65/16D-60/A, E-60/A NM 65/16B-60/A, C-60/A NM 65/16A-60/A	80	65	100	525 640 715	160	200	345 345	-	125	95	280	212	49 40 40	-	65	-	14	-	150	172	320 410 460	-	-	15	75-70 106-100 133,5	
	NM 65/20C-60/A NM 65/20B-60/A	80	65	100	715	180	225	365	-	125	95	320	250	50	-	65	-	14	-	155	175	460	-	-	15	139,5 145	
	4	NM 65/200A-60/A	80	65	100	825	202	225	408	22	125	95	320	250	254	20	80	90	18	14	155	175	245	400	360	42*	185
		NM 65/250B-60/A, C-60/A	80	65	100	825	202	250	408	2	160	120	360	280	254	20	80	90	18	14	175	190	245	400	360	42*	201-195
	1	NM 80/16E-60/A NM 80/16C-60/A, D-60/A NM 80/16B-60/A NM 80/16A-60/A	100	80	125	545 670 745 745	180	225	340 365 365 365	-	125	95	320	250	60 50 50 50	-	65	-	14	-	165	193	320 415 465 465	-	-	15	83,5 113-108 142,5 150
		NM 80/200A-60/A, B-60/A	100	80	125	850	202	250	408	22	160	120	345	280	254	20	80	90	18	14	170	194	245	400	360	42*	200-194
		NM 80/250D-60/A, E-60/A	100	80	125	850	202	280	408	2	160	120	400	315	254	20	80	90	18	14	191	210	245	400	360	42*	209-203
		NM 100/200E-60/A NM 100/200C-60/A, D-60/A	125	100	125	800 850	192 202	280	377 408	- 2	160	120	360	280	216 254	20 20	80	69 90	18	12 14	180	212	239 245	298 400	258 360	6 42*	179 201-195

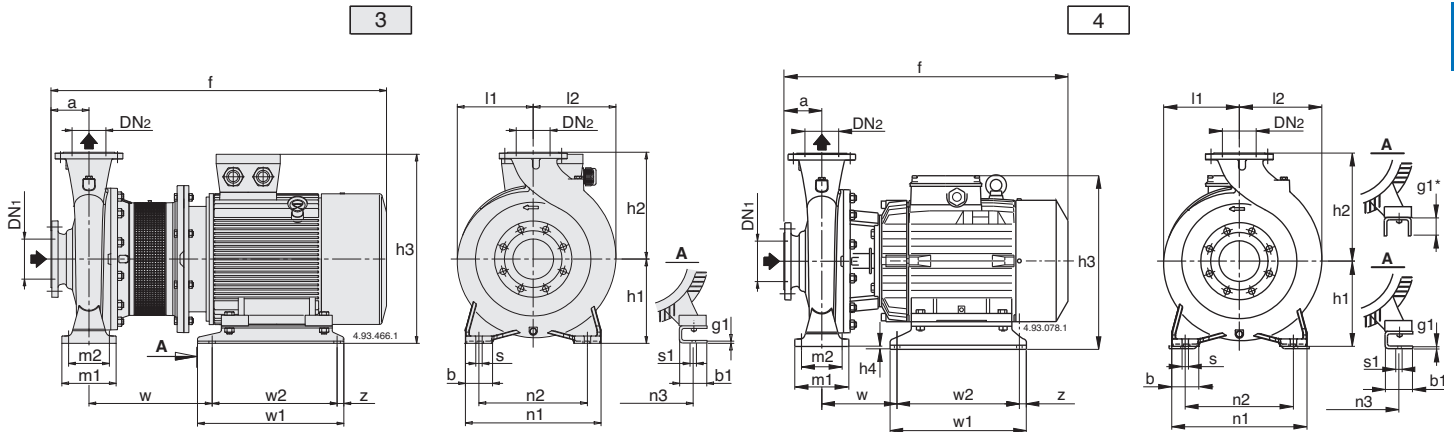
Flanges EN 1092-2



mm					
DN	C	K	D	Holes N°	g2 Ø
32	76	100	140	4	19 18
40	84	110	150	4	19 18
50	99	125	165	4	19 20
65	118	145	185	4	19 20
80	132	160	200	8	19 22
100	156	180	220	8	19 24
125	184	210	250	8	19 24

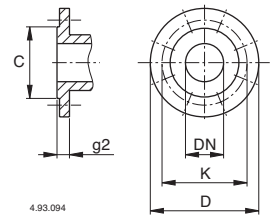
Picture	NMS	mm																				kg				
		DN1	DN2	a	f	h1	h2	h3	h4	m1	m2	n1	n2	n3	z	b	b1	s	s1	l1	l2		w	w1	w2	g1
2	NMS 65/250A-60	80	65	100	1032	200	250	505	-	160	120	360	280	318	-	80	83	18	19	175	190	406	355	305	-	347
	NMS 80/250C-60	100	80	125	1057	200	280	505	-	160	120	400	315	318	-	80	83	18	19	200	210	406	355	305	-	-
	NMS 80/250B-60	100	80	125	1130	225	280	550	-	160	120	410	315	356	-	80	80	18	19	225	225	445	361	286	-	416
	NMS 80/250A-60	100	80	125	1198	250	280	642	-	160	120	410	315	406	-	80	100	18	24	275	275	619	409	349	-	-
	NMS 100/200B-60	125	100	125	1057	200	280	505	-	160	120	360	280	318	-	80	83	18	19	200	212	406	355	305	-	345
	NMS 100/200A-60	125	100	125	1130	250	280	550	-	160	120	410	315	356	-	80	80	18	19	225	225	445	361	286	-	-
	NMS 100/250B-60 NMS 100/250A-60	125	100	125	1213 1286	250 280	280	642 712	-	160	120	410	315	406 457	-	80	100 100	18	24 24	275 275	275	494 516	409 479	349 368	-	-

Dimensions and weights



Picture	B- NM	mm																				kg																									
		DN1	DN2	a	f	h1	h2	h3	h4	m1	m2	n1	n2	n3	z	b	b1	s	s1	l1	l2	w	w1	w2	g1	B-NM																					
1	B-NM 32/12S-60, A-60, D-60, F-60	50	32	80	405	112	140	240	-	100	70	190	140	37	-	50	-	14	-	93	97	245	-	-	12	33-32-31-29																					
	B-NM 32/16B-60	50	32	80	410	132	160	260	-	100	70	240	190	47	-	50	-	14	-	120	120	250	-	-	12	44																					
	B-NM 32/16A-60/A				450																	290				48																					
	B-NM 32/20D-60/A	50	32	80	450	160	180	298	-	100	70	240	190	60	-	50	-	14	-	140	140	290	-	-	12	52																					
	B-NM 32/20C-60/A				475																	295				60																					
	B-NM 32/20A-60/A				475																	298				60																					
	B-NM 40/12C-60, F-60				410																	112				140	240	-	100	70	210	160	37	-	50	-	14	-	100	113	250	290	-	-	12	35-33	
	B-NM 40/12A-60/A	450	120	120	290	-	-	-	-	-	-	-	-	-	-	-	-	-	-	-	-	-	-	-	-	40																					
	B-NM 40/16C-60/A	65	40	80	450	132	160	270	-	100	70	240	190	45	-	50	-	14	-	119	119	290	-	-	12	48																					
	B-NM 40/16B-60/A				475																	295				56																					
B-NM 40/16A-60/A	475				298																	57,5																									
B-NM 40/20C-60/A, D-60/A	65	40	100	495	160	180	298	-	100	70	265	212	60	-	50	-	14	-	140	140	295	-	-	12	63,5-62,5																						
B-NM 40/20A-60/A, B-60/A				580																	320				49	80,5-75																					
4	B-NM 40/25B-60/B, C-60/B	65	40	100	635	192	225	377	12	125	95	320	250	216	20	65	69	14	12	175	175	174	298	258	6	130-124																					
	B-NM 40/25A-60/B				705																	216				20	159,5																				
1	B-NM 50/12F-60/A	65	50	100	470	132	160	270	-	100	70	240	190	45	-	50	-	14	-	121	137	290	-	-	12	52																					
	B-NM 50/12D-60/A				495																	270				45	61																				
	B-NM 50/12A-60/A				495																	270				45	63,5																				
1*	B-NM 50/160A-60/B, B-60/B	65	50	100	580	160	180	320	-	100	70	265	212	49	-	50	-	14	-	127	141	375	-	-	14	80,5-74,5																					
	B-NM 50/200A-60/B, B-60/B				695																	216				20	128-121																				
	B-NM 50/25C-60/B				635																	216				20	135																				
	B-NM 50/25B-60/B				710																	216				20	144																				
	B-NM 50/25A-60/B				710																	216				20	161																				
4	B-NM 50/25/65E-60/A	65	50	100	635	192	225	377	12	125	95	320	250	216	20	65	69	14	12	175	175	174	298	258	6	135																					
	B-NM 50/25/65D-60/A				710																	216				20	156,5																				
	B-NM 50/25/65C-60/A				710																	216				20	161																				
	B-NM 65/125A-60/A, C-60/A				580																	160				180	320	-	125	95	280	212	49	-	65	-	14	-	134	156	375	-	-	15	93,5-73		
1*	B-NM 65/160D-60/A, E-60/A	80	65	100	575	160	200	320	-	125	95	280	212	49	-	65	-	14	-	150	172	375	-	-	15	83,5-79																					
	B-NM 65/160C-60/A				660																	345				40	108																				
4	B-NM 65/160B-60/A	80	65	100	695	192	200	377	32	125	95	280	212	216	20	65	69	14	12	150	172	234	298	258	6	149																					
	B-NM 65/160A-60/A				770																	216				20	178,5																				
	B-NM 65/200B-60/A, C-60/A				775																	192				225	377	22	125	95	320	250	216	254	20	65	69	14	12	14	155	175	239	298	258	6	183-169,5
	B-NM 65/200A-60/A				825																	202				250	408	2	160	120	360	280	254	20	80	90	18	14	175	190	245	400	360	42*	200	216-210	
1*	B-NM 80/160E-60/A	100	80	125	605	180	225	340	-	125	95	320	250	60	-	65	-	14	-	165	193	375	-	-	15	108,5																					
	B-NM 80/160D-60/A				685																	365				50	116																				
4	B-NM 80/160C-60/A	100	80	125	725	192	225	377	12	125	95	340	250	216	20	65	69	14	12	165	193	239	298	258	6	155																					
	B-NM 80/160B-60/A				800																	216				20	175,5																				
	B-NM 80/160A-60/A				800																	216				20	182																				

Flanges EN 1092-2



mm						
DN	C	K	D	g2		
				N°	Ø	
32	76	100	140	4	19	18
40	84	110	150	4	19	18
50	99	125	165	4	19	20
65	118	145	185	4	19	20
80	132	160	200	8	19	22
100	156	180	220	8	19	24
125	184	210	250	8	19	24

Picture	B-NMS	mm																				kg			
		DN1	DN2	a	f	h1	h2	h3	h4	m1	m2	n1	n2	n3	z	b	b1	s	s1	l1	l2	w	w1	w2	g1
2	B-NMS 65/250A-60	80	65	100	1032	200	250	505	-	160	120	360	280	318	-	80	83	18	19	175	190	406	355	305	-
	B-NMS 80/200B-60	100	80	125	936	180	250	386	-	125	95	345	280	254	20	65	60	14	15	170	194	259	350	310	6
3	B-NMS 80/200A-60	100	80	125	936	180	250	386	-	355	305	388	318	254	20	83	60	19	15	170	194	259	350	310	6
	B-NMS 80/250D-60, E-60	100	80	125	936	200	280	406	-	160	120	400	315	254	20	80	60	18	15	191	210	259	350	310	6
B-NMS 80/250C-60	1057				406																	355			
2	B-NMS 80/250B-60	100	80	125	1130	225	280	550	-	260	220	410	315	356	-	80	80	18	19	225	225	445	361	286	-
	B-NMS 80/250A-60				1198																	250			
3	B-NMS 100/200E-60	125	100	125	857	200	280	406	-	160	120	360	280	216	20	69	15	180	15	180	212	345	298	258	6
	B-NMS 100/200C-60, D-60				936																	250			
2	B-NMS 100/200B-60	125	100	125	1057	250	280	505	-	260	220	410	315	318	-	83	19	200	225	225	406	355	305	-	
	B-NMS 100/200A-60				1130																250				280
3	B-NMS 100/250B-60	125	100	125	1213	280	280	672	-	260	220	410	315	440	-	80	100	18	24	275	275	494	540	461	-
	B-NMS 100/250A-60				1286																	280			

* Version without coupling guard

Features

Cutting edge hydraulics

The geometry of the impeller and the pump casing are optimized to achieve maximum efficiency and the best suction capability.

Flexibility

The option to choose between cast iron and bronze materials for the hydraulic parts in contact with the pumped liquid allows NM and NM4 series pumps to be selected for use with different types of liquids.

Compact Design

The compact design allows for easy installation even in confined spaces.

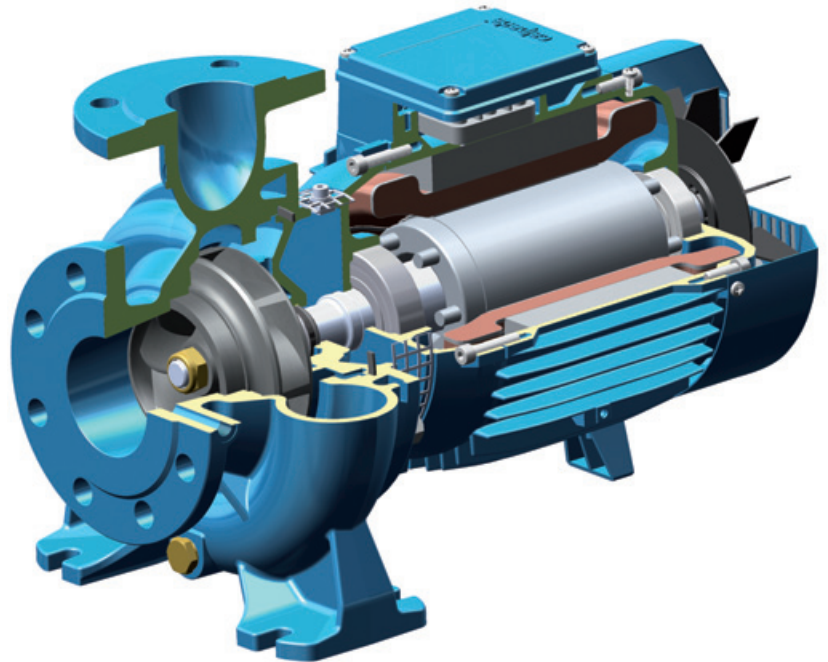
Exclusive design

An innovative, patented guard prevents contact with rotating parts, providing protection to the end user whilst allowing for inspection of the mechanical seal.

Reliability

The bearing and shaft are designed to ensure the reduction of the stress, providing high reliability under all operating conditions.

NM



Cutting edge hydraulics

The geometry of the impeller and the pump casing are optimized to achieve maximum efficiency and the best suction capability.

Flexibility

The option to choose between cast iron and bronze materials for the hydraulic parts in contact with the pumped liquid allows NMS and NMS4 series pumps to be selected for use with different types of liquids.

New lantern bracket construction

The lantern brackets incorporate a thrust bearing on the hydraulic side which guarantees the elimination of additional loads on the motor bearings. The flange is sized to be used with standard motors B35.

Exclusive design

An innovative, patented guard prevents contact with rotating parts, providing protection to the end user whilst allowing for inspection of the mechanical seal.

Simplified motor maintenance

The presence of the thrust bearing on the hydraulic side makes it easier to remove the motor, facilitating maintenance operations and eliminating the risks of damage to the hydraulic parts.

NMS

